

**Schedule of joinery**

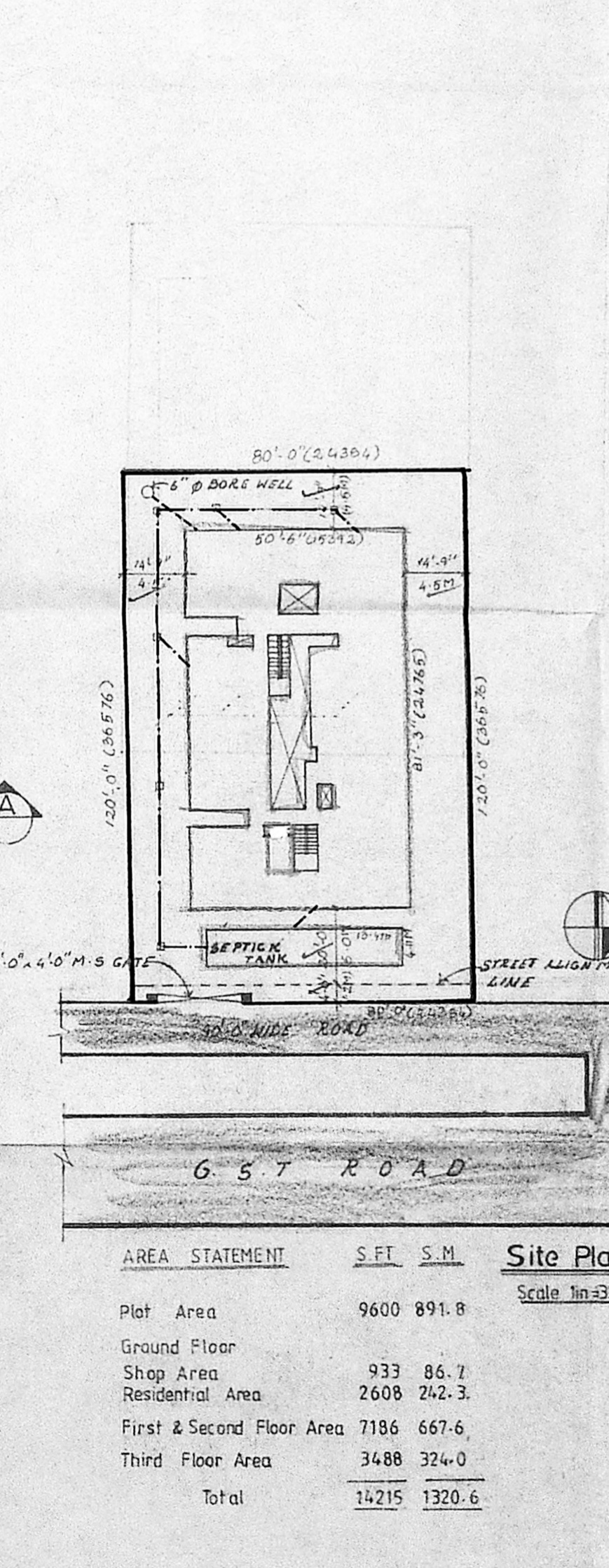
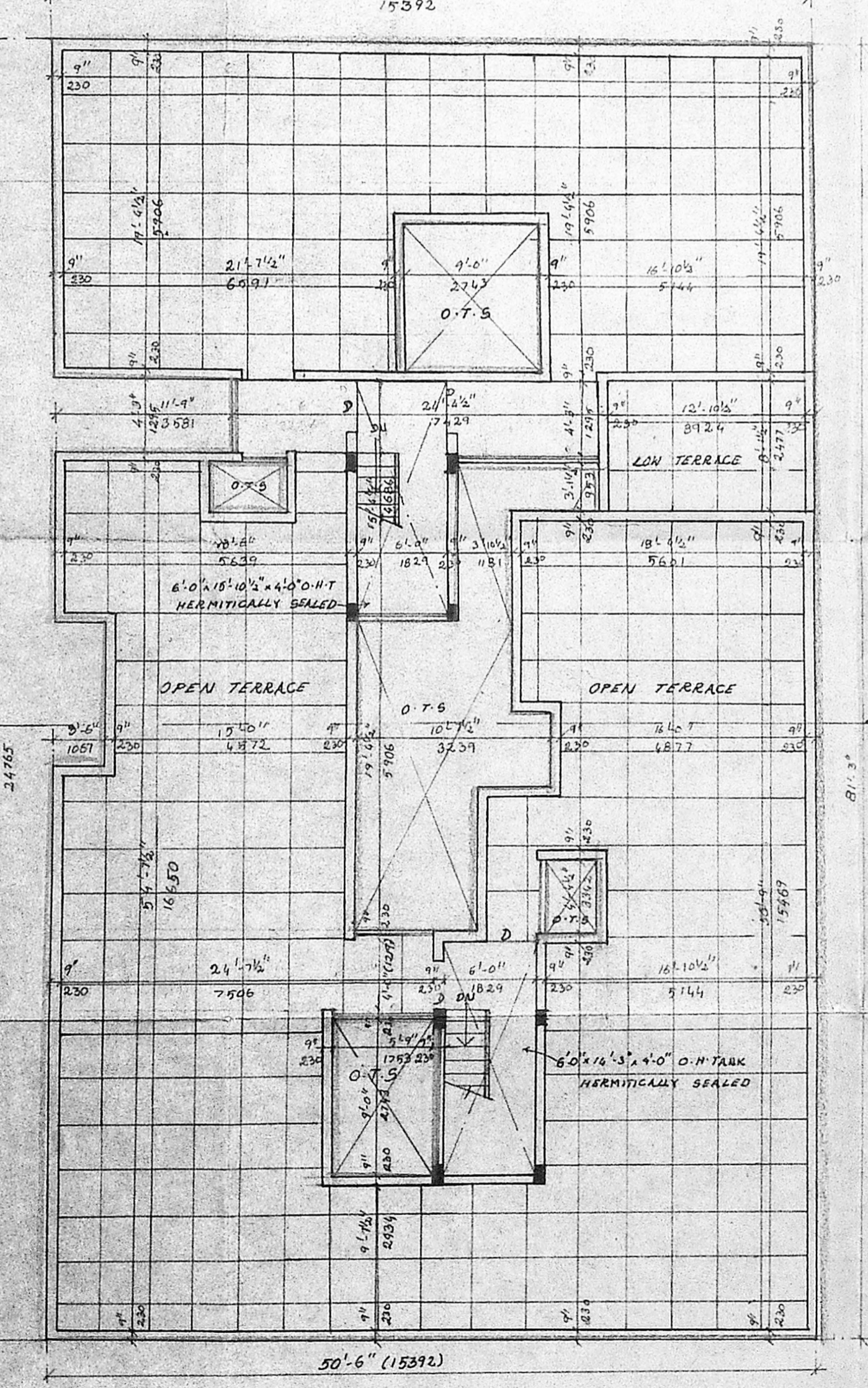
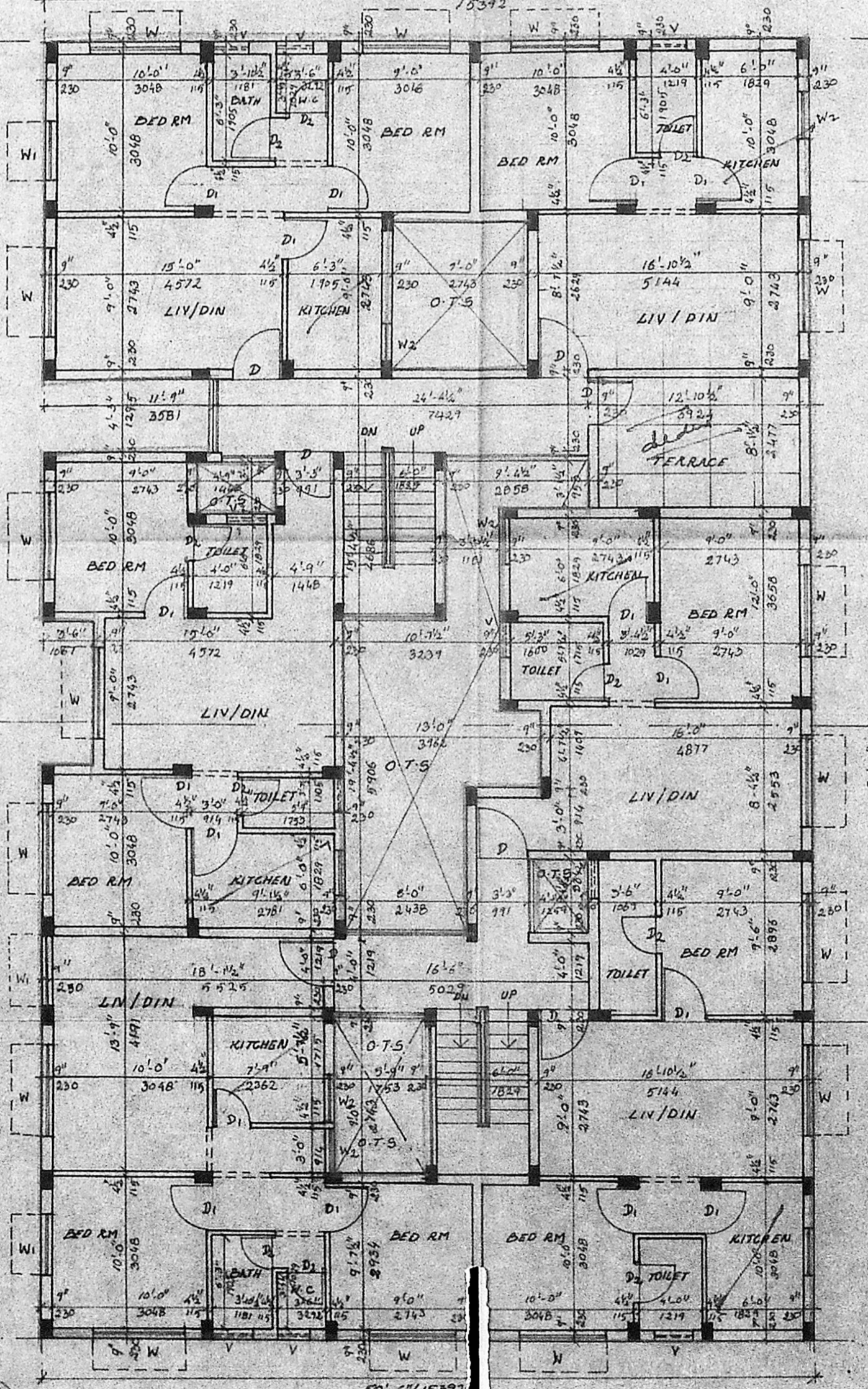
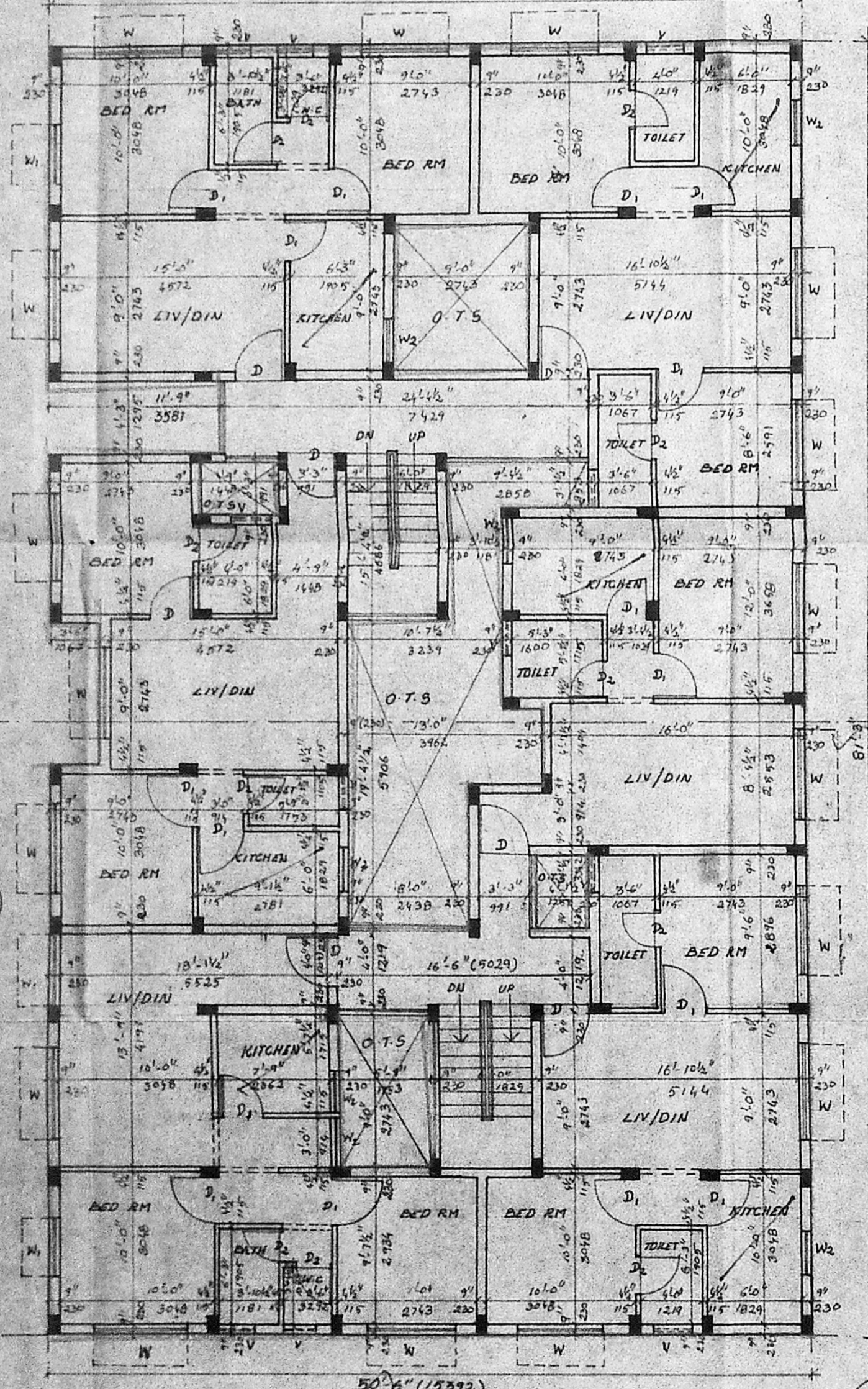
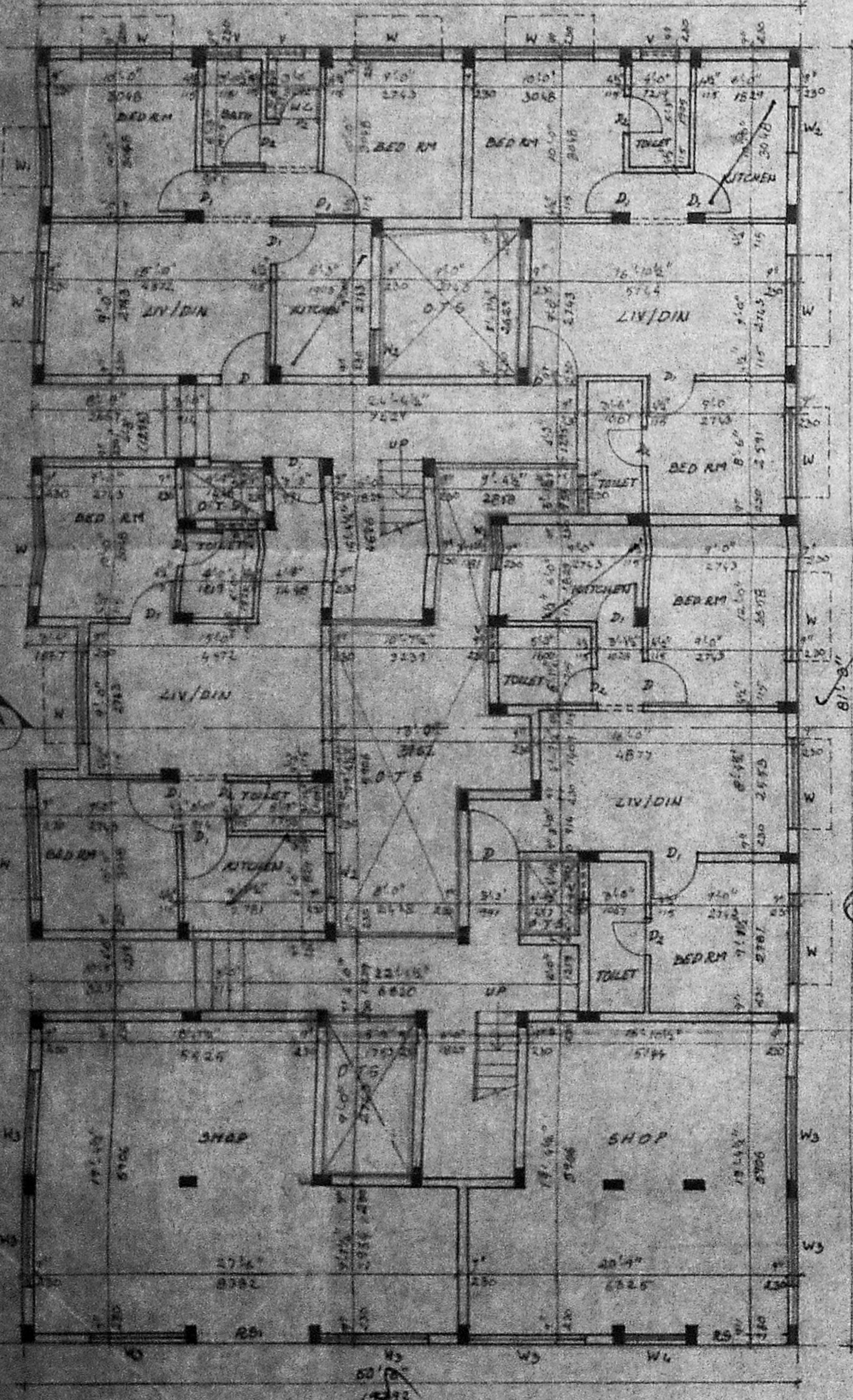
No	Width	Height	Description
D	3'-5"	7'-0"	T.W. PARALLELED DOOR
D1	3'-0"	7'-0"	PCP
D2	2'-6"	7'-0"	
R.S			W.M.D.A. P.B. / ROILING SHOTTLES
R.S1			C.N.O. ...
W			SHOPS
W1			SHOPS
W2			SHOPS
W3			SHOPS
W4			SHOPS
W5			SHOPS
W6			SHOPS
W7			SHOPS
W8			SHOPS
W9			SHOPS
W10			SHOPS
W11			SHOPS
W12			SHOPS
W13			SHOPS
W14			SHOPS
W15			SHOPS
W16			SHOPS
W17			SHOPS
W18			SHOPS
W19			SHOPS
W20			SHOPS
W21			SHOPS
W22			SHOPS
W23			SHOPS
W24			SHOPS
W25			SHOPS
W26			SHOPS
W27			SHOPS
W28			SHOPS
W29			SHOPS
W30			SHOPS
W31			SHOPS
W32			SHOPS
W33			SHOPS
W34			SHOPS
W35			SHOPS
W36			SHOPS
W37			SHOPS
W38			SHOPS
W39			SHOPS
W40			SHOPS
W41			SHOPS
W42			SHOPS
W43			SHOPS
W44			SHOPS
W45			SHOPS
W46			SHOPS
W47			SHOPS
W48			SHOPS
W49			SHOPS
W50			SHOPS
W51			SHOPS
W52			SHOPS
W53			SHOPS
W54			SHOPS
W55			SHOPS
W56			SHOPS
W57			SHOPS
W58			SHOPS
W59			SHOPS
W60			SHOPS
W61			SHOPS
W62			SHOPS
W63			SHOPS
W64			SHOPS
W65			SHOPS
W66			SHOPS
W67			SHOPS
W68			SHOPS
W69			SHOPS
W70			SHOPS
W71			SHOPS
W72			SHOPS
W73			SHOPS
W74			SHOPS
W75			SHOPS
W76			SHOPS
W77			SHOPS
W78			SHOPS
W79			SHOPS
W80			SHOPS
W81			SHOPS
W82			SHOPS
W83			SHOPS
W84			SHOPS
W85			SHOPS
W86			SHOPS
W87			SHOPS
W88			SHOPS
W89			SHOPS
W90			SHOPS
W91			SHOPS
W92			SHOPS
W93			SHOPS
W94			SHOPS
W95			SHOPS
W96			SHOPS
W97			SHOPS
W98			SHOPS
W99			SHOPS
W100			SHOPS

- Specification**
- FOUNDATION CONCRETE IN P.C.C. 1:4:8 WITH 1% BROKEN GRANITE JELLY
  - C.C. 1:2:4 FOR ALL R.C.C. WORKS WITH BROKEN GRANITE JELLY
  - 3" T.K. (230mm) BRICK WORK IN C.M. 1:3
  - 4 1/2" T.K. (115mm) BRICK WORK IN C.M. 1:4 WITH 6mm M.S. ROBS AT EVERY THIRD COURSE
  - PLASTERING THE CEILING AND EXPOSED CONCRETE SURFACE IN C.M. 1:3
  - PLASTERING THE WALLS IN C.M. 1:4
  - WEATHERING COURSE IN BRICK JELLY, LINE CONCRETE 3" AVERAGE TH WITH A COURSE OF FLAT TILES IN C.M. 1:3
  - FLOORING WITH HYDRAULICK PRESSED MOSAIC TILES SET IN C.M. 1:4 AND SCIRTING 5" HEIGHT
  - THE D.M.T IS HERMETICALLY SEALED.

**Legend**

- Proposed Construction Shown Thus
- Boundary Line
- Roads
- Sewer Line
- Water

Scale	1in=8ft	Date	11-09-90
Owner	Jopichand		



**AREA STATEMENT**

	S.F.T	S.M
Plot Area	9600	891.8
Ground Floor		
Shop Area	933	86.7
Residential Area	2608	242.3
First & Second Floor Area	7186	667.6
Third Floor Area	3488	324.0
Total	14215	1320.6

**Site Plan**  
Scale 1in=32ft

**Job Title**  
Proposed Apartments at Plot No: 68, G. S. T Road, Chromepet, Madras - 600 044, Bearing S: No. 508, For Mr. A. G. A. Gopichand.

**Architect**  
S. Subramaniam M. Arch. A.I.A.  
Architect & Interior Designer.  
Licensed Class-1, Surveyor No: 90,  
Kasturibai Nagar, Adyar,  
Madras-600 020. Ph: 411305.